

# Beehive Buzzer

April 2014 Volume 42 Issue 4



## Issue Highlights...

*Beehive rock and Gem program  
Birthday Celebration!!*

<i>President's message</i>	2
<i>Calendar</i>	2
<i>Tracy's Rock</i>	3
<i>Federations trip</i>	4
<i>Extended field trips</i>	5
<i>Upcoming day trips</i>	5
<i>Woodruff / Birch Creek area</i>	6
<i>Birthstone for April</i>	7
<i>Safety tips</i>	8
<i>Internet address</i>	10
<i>Officers &amp; Club Info</i>	11

## Club Notes:

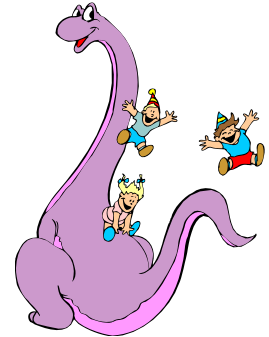
*Exciting field trip schedule planned  
this year with day trips... The first  
field trip is this Saturday:  
April 19...Wendover Day field trip  
(See page 5)*

## Beehive Rock & Gem Club Program

Thursday, Date 24, 2014 – 7 pm

After our lively & successful rock-  
auction last month we will have:

- Some of our club kids present some interesting visual facts that we can learn from “dinosaur tracks” so also bring your kids and grandchildren.
- Look at some new visual ideas for our skills in working our rock finds which need flat finished surfaces.



“Rocky” Ray, Program Chairman



## Birthday!

Raymond Law will be 80 years YOUNG on his birthday, we would like to invite anyone who would like to come join us at a open house in his honor at the Roy 1<sup>st</sup> & 14<sup>th</sup> Ward.

LOCATION: 2575 W. 5850 S. Roy Ut.

WHEN: May 17<sup>th</sup> 2014

TIME: 3:00 PM to 5:00 PM



“I much prefer being over the hill to being under it.”

Bruce Lansky, Poet

**April**

**19**

**Wendover trip**

**24**

**Monthly Club meeting at Roy municipal Center**

**May**

**1**

**Board Meeting Roy Library**

**7 pm**

**17**

**Woodruff Trip**

**14-18**

**Henry's Mt**

**22**

**Monthly Club Meeting Roy Municipal Center 7 pm**

**June**

**5**

**Board Meeting Roy Municipal Center 7 pm**

**6-8**

**Delta Trip**

**21**

**Eureka Trip**

**26**

**Monthly Club Meeting Roy Municipal Center 7 pm**

Note: There are no shows listed in the newsletter this month but you can go to <http://www.rockngem.com/show-dates-display/?ShowState=ALL> for shows throughout the country.



**President's Message**

I the President would like everyone to look at the web page for the future field trips. Contact Roger Bush for any interest in the field trips, be sure to give him a 2 day notice. Keep in mind they will be the third Saturday each month. If you notice any mistakes on our web page or problems with the web site contact me Dan Siler.

**Auction**

In March we had our auction, and it was a success and we all had a great time. There were lots of fun and some good surprises! Thanks to all who came and joined us hope to see more of you here next time!



Credit: NASA/Eugene Cernan

# Tracy's Rock

By Dave Harris

One of the most famous photos taken during the Apollo 17 mission at the Taurus-Littrow landing site is what was officially called Split Rock or Station 6 Boulder. Incidentally, I included this photo in the *Nov-Dec 2013 Beehive Buzzer* for the Apollo 17 mission 40th anniversary. This is the story of how this large boulder became known as Tracy's Rock.

Mission Commander Eugene Cernan, and Harrison Schmitt, the only professional geologist sent to the moon, spent considerable time studying the rock and its vicinity at station 6 during their third Extravehicular Activity (EVA-3).

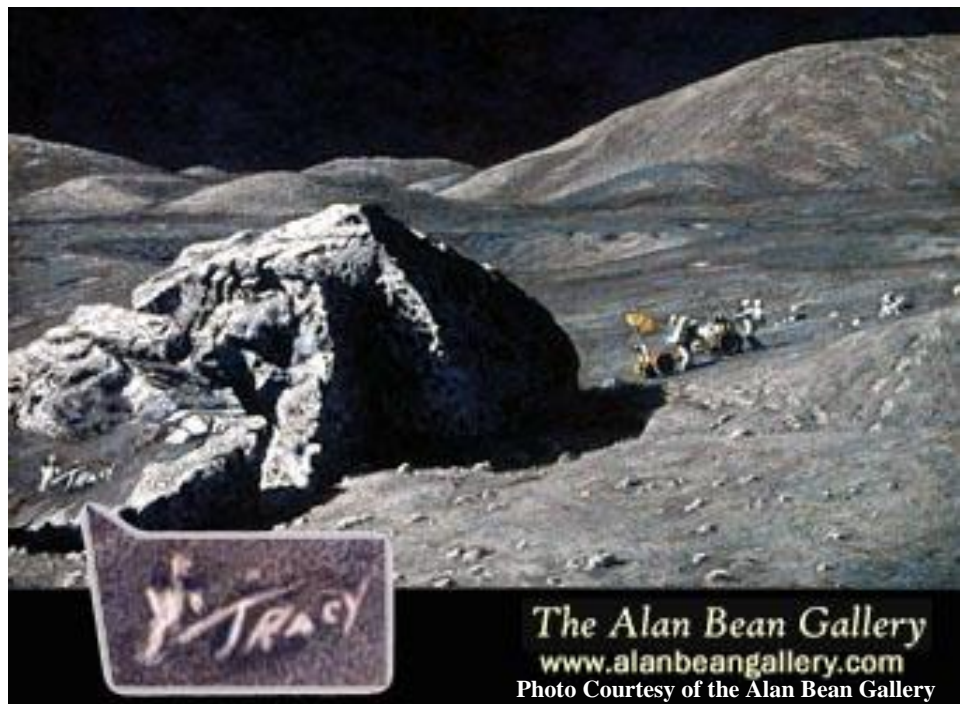
Cernan stepped to the northeast corner of fragment 1, and reaching out as far as possible swept the collection bag twice, leaving furrows in the dust. (These furrows can be seen in the lower left-hand corner of the photo.) A few minutes later, Cernan took a series of photos from higher up the hill. In this photomontage, Schmitt is standing to the left of the rock and the Lunar Roving Vehicle (LRV) is parked to the right

Now that you know about the rock, I need to bring up the name of another astronaut to complete the story. Astronaut Alan Bean, a member of the Apollo 12 and Skylab 3 flight crews, took up a career as a professional artist after he left the Astronaut Corps and has developed a considerable reputation as a space artist. The Station 6 Boulder one of his paintings he became a subject of called "Tracys Boulder". As a result of this particular painting, the popular name for this boulder has since been known as Tracy's Rock. Tracy refers to the name of Gene Cernan's daughter, who was nine years old at the time of the mission.

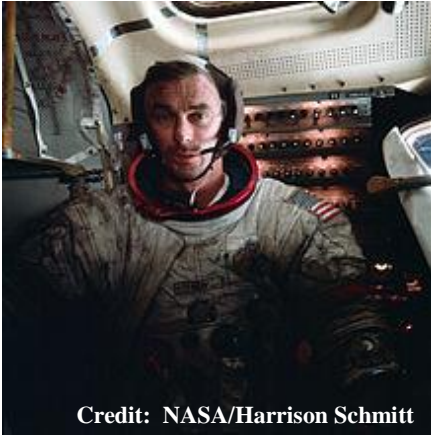
**“...he said that he'd done it to save me the trouble of going back to do it myself, and to save the taxpayers the expense of sending me back.”**

So why did Alan Bean use Tracy's name for the painting? I'll let Gene Cernan explain it in his own words:

"It was on this part of the rock that Al Bean wrote 'Tracy', my daughter's name, in one of his paintings. After we came home I started to see a picture of the boulder in lots of places. It was the picture of Jack going past the corner of the rock, one of the pictures from my pan. It became very popular. One day Al Bean came by and said he was doing a painting of it. And it was a big painting, six feet by three feet or something like that. Al likes to have stories in his paintings and he wanted to talk about it. So we talked about the



The Alan Bean Gallery  
[www.alanbeangallery.com](http://www.alanbeangallery.com)  
 Photo Courtesy of the Alan Bean Gallery



Credit: NASA/Harrison Schmitt

### Gene Cernan in the LM after Apollo 17 EVA-3

done it to save me the trouble of going back to do it myself, and to save the taxpayers the expense of sending me back." (*On the Moon: The Apollo Journals*, by Grant Heiken, Eric Jones, pg 436)

slope and how hard it was to climb up there and I said that, if I'd known the picture was going to get so much notoriety, I wished I would have done something that I hadn't even thought of at the time. And that is to have printed Tracy's name in the dust. Al's daughter Amy and Tracy had grown up together and he asked 'How would you have done it'. So I wrote it out on a piece of paper and, sometime later, he called and wanted me to come over and look at what he'd done. He had erased the place where I'd taken the sample and had put in Tracy's name, instead. And in the little story he put with the picture, he said that he'd



Credit: Matthew G. Bisanz

### Alan Bean in His Studio

## Multi-Federation Field Trip – Make Plans To Attend

By Doug True, Field Trip Chair

The town of Terry Montana may be small, but they are planning on rolling out the red carpet for us as they host the AFMS 2014 the Multi-federation field trip gathering. The dates are from July 31, 2014 to Aug. 4<sup>th</sup> 2014, so mark your calendars and get ready to register!

Terry is right in the middle of the best Montana rock hounding areas. We will have numerous trips to the gravel bars on the Yellowstone River, Productive areas that I've been hunting on annually for 40 + years. Many are accessed only through private property, but permission has been granted. We will be hunting for Montana agates, Jasper, petrified wood, fossil coral, stromatolites, and numerous other "oddities".

We have numerous trips into Montana fossil country to the Pierre and Bear Paw formations areas, and we'll collect ammonites, baculites, scaphites, nautilus and many other shells (70 -95 million years old) in the ancient sea bed areas. We are also working on trips to several areas where we can collect dinosaur fossils from the Hell Creek formation. More information will be forthcoming as plans are solidified.

In addition, we'll have an opportunity to take a guided tour through the Eastern Montana Badlands – a once in a lifetime opportunity.

Start planning your collecting vacation now. Kids are welcome!!! What could be better than four days in Eastern Montana with a chance of collecting wonderful materials.

BUT wait, there's more.... The town of Terry is allowing us to use their 2 block city park for dry camping and other activities. We'll have a pot luck dinners, a barbecue and much, much more.

For more information contact Doug True, Fieldtrip Chair, (406)670-0506, or email [dtrue@Yahoo.com](mailto:dtrue@Yahoo.com)



## 2014 Beehive Rock and Gem Club Field Trip Schedule

### Beehive Extended Field Trips

May 1-7 Knapp In	Nephi
June 7-?	Grouse Creek / Lucin
Sept. 1-21	Mc Dermmitt NV
October 9- 10-11-12 13-?	Floy Wash / Henry Mts



### Upcoming DAY Field Trips...

April 19<sup>th</sup> .....Wendover

For April's short trip, we will meet at the Sinclair Station off of exit 4 on I 80 by 10 AM Saturday April 19.

My (Roger Bush) cell number is 801-388-8605. Home phone is 801-775-0147. Please call if you plan to attend

May 17<sup>th</sup> ..... Woodruff

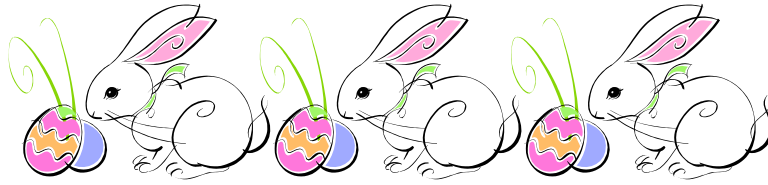
June 21<sup>st</sup> ..... Eureka

July 19<sup>th</sup> ..... Yuba Lake, Levan

August 16<sup>th</sup> ..... Mantua, Sardine Summit, Hyrum

Sept. 20<sup>th</sup> ..... Ophir, Mercur

October 18..... Gold Hill (Pending)



## **Birch Creek / Woodruff Creek area**

### Fossil-Bearing concretions

Most of the area is blanketed by Tertiary sedimentary deposits, some are interesting concretions. Concretions can range in size from a few inches (typical) up to a foot or more in diameter. These concretions are interesting in that they often have a fossil as the core. Gastropods are common in the concretions occur in a wide belt whose full extent is undetermined. But it runs at least from the Causey Reservoir area in Morgan County to the Woodruff Reservoir area in Rich County, and probably extends to the Bear Lake area on the north and Echo to the south. They can be found about 6 miles west of Woodruff, on Utah Highway 39 to the intersection with a secondary road leading south to the Woodruff Reservoir. Birch Creek and Woodruff Creek meet at this point and concretions can be found along the road. Concretions litter the surrounding ridge tops, such as a cutoff Ridge and Strawberry ridge, north of Highway 39, and the Red Mountain area south of Highway 39.

Land Status: Mixture of BLM public land, state land, and private land.

Information comes from: A Guide to collecting sights.

References: Dr Richard W. Moyle, Geology Department, Weber State University, Ogden Ut.



## DIAMOND

As the April birthstone, diamonds are the ideal gift for a loved one. And now you have more choices than ever. Get creative and give the ultimate gift of beauty: a fancy-color diamond. Fancy-color diamonds are natural, rare and truly exotic gem of the earth. Diamonds in hues of yellow, red, pink, blue, and green range in intensity from faint to vivid and generally the more saturated the color, the higher the value. In fact, diamonds sparkling with intense color are rare and may be priced higher than a colorless diamond of equal size. Because fancy-color diamonds are very desirable, color is sometimes introduced in a laboratory. These are correctly called *color-treated diamonds*. When purchasing a fancy-color diamond, the shopper should ask if any enhancements or treatments were used to improve its color and/or clarity



Diamonds are a thing of beauty and the ultimate gift for a loved one. Thought to be one of the hardest substances on the globe, diamonds date back billions of years. The diamond is the traditional [birthstone of April](#) and holds significant meaning for those born in that month, thought to provide the wearer with better relationships and an increase in inner strength. Wearing diamonds is purported to bring other benefits such as balance, clarity and abundance. It's also symbolic of eternal love, and those fortunate to call April the month of their birth will enjoy the following history behind this rare gem.

### Diamond Gemstones

Adopted from the Greek work "adamas," meaning invincible, [diamonds](#) come in a wide range of colors such as black, blue, green, pink, red, purple, orange and yellow. The color is dependent upon the type of impurities that are present in the stone. Yellow stones have minuscule traces of nitrogen while blue ones contain boron.

### The Origin of Birthstones

It's uncertain how the specific months became connected with the various stones. However, some speculate that their origins date back to biblical times when the breastplate belonging to a priest was decorated with 12 assorted colored gems. As time wore on, the 12 gems became associated with the zodiac and the months connected to it.

This started the tradition of wearing a colored stone each month as a sort of good luck charm. Initially people wore all twelve stones, rotating according to the month of the year to derive the greatest benefit of each stone. Believing that the various gems held magical powers for the individual born within a given month, people started to wear the stone associated with their birth month for the entire year. In 1912, the American National Association of Jewelers designed a list dedicating different gems to various months. What was once thought to be controversial based on its commercialism is now widely accepted as the official birthstone list.

## Safety tips

Here's the most basic fact of rockhounding: ROCKHOUNDING IS INHERENTLY RISKY. We work with heavy, pointed hammers; pry bars, chisels, sledgehammers and big heavy rocks in generally secluded areas where the earth is broken. Here's information you'll need to keep you safe and healthy.

### FIELD SAFETY TIPS

#### Tick Removal:

"Apply a glob of liquid soap to a cotton ball. Cover the tick with the soap-soaked cotton Ball and swab it for a few seconds (15-20); the tick will come out on its own and be stuck to the cotton ball when you lift it away."

### INSECT BITES

If stung or bitten by an insect, dissolve one fourth (1/4) teaspoon of meat tenderizer in two (2) teaspoons of water and rub this solution into the skin around the area of the sting or bite. This should relieve the pain.

### RATTLESNAKE BITES:

An understatement: "An ounce of preventions is worth a pound of cure!" When it comes to rattlesnake bites!! If someone gets bite by a rattlesnake, get them to the nearest hospital immediately. Limit the victim activities if possible to keep their heart rate normal. Help the individual to remain clam and comfortable. Reassure the victim that it is not a life-threatening. Wash bite area with water and remove restrictive jewelry or clothing that would interfere with swelling. Position the affected bite area below the victim's heart. Call 911 to contact the hospital to alert staff to facilitate treatment instructions.

### Steps to Prevention:

1. Wear high leather boots and / or snake leggings.
2. Stay close to vehicles and transportation routes.
3. Do not rockhound alone.
4. Always assume snakes are active even if the weather is cold and cloudy.
5. Snakes are more likely to be out from under cover on cloudy warm days and especially at night.
6. Use a walking stick or rock scoop/grabber to explore with or overturn rocks. (Baby snakes have venom TOO!)
7. Walk slowly in areas of thicker vegetation, create vibrations with your footsteps and your walking stick.
8. Walk away from the shaded side of bushes or holes when it is sunny and hot.
9. Walk around logs or large rocks or drop-offs where a rattlesnake may be resting.
10. Be especially alert when climbing a steep incline, which could result in snakebite to the upper body.
11. If a rattlesnake is located slowly move away and warn others. Do not try to kill it and collect it rattles!
12. Rattlesnakes do not always rattle... look for them.





**FINAL PREVENTION** – Have a good health insurance; rattlesnake bit anti-venom is very expensive!!!

Compiled from A.F.M.S Newsletter-June/July 2012

**HEART ATTACKS:**

1. Dissolve two (2) Bayer “Crystal” Aspirin in the victims’ mouth & help them swallow some water.
2. Call 911 and report that the Heart Attack victim has taken two Aspirin and listen for directions.
3. Transport victim to hospital, make certain victim is sitting and not lying down.

Compiled from RMFMS Newsletter-January 2012

**BURNS:**

1. Cool down the burned area with cool water gently applied.
2. Apply white part of a raw egg to the burn area and let dry.
3. Continue adding layers of raw egg white and letting each layer dry
4. Seek medical attention as soon as possible for sever burns.

Compiled from RMFMS Newsletter- September/October 2011

**NOTE:** the above tips were featured in the May 2013 issue of jade State News.

It’s that time of the year for you to think about your equipment that you will need now that we are getting back into the Field Trips. Things to think about...

Do you have your equipment ready?

A check list for **YOU:**

Do you have your hat, good high top boots, walking stick, bug spray, sun screen, water, toilet paper, towels, spare change of clothes, first aid kit, matches or lighter, paper to burn, emergency blanket or space blanket, whistle and snacks for emergencies?

For the **CAR:**

Spare can of gas, shovel, spare tires, a jack for the vehicle, axe, tool box, rope, tow strap, tire repair kit, tent, flash light ( with good batteries of course), duct tape?

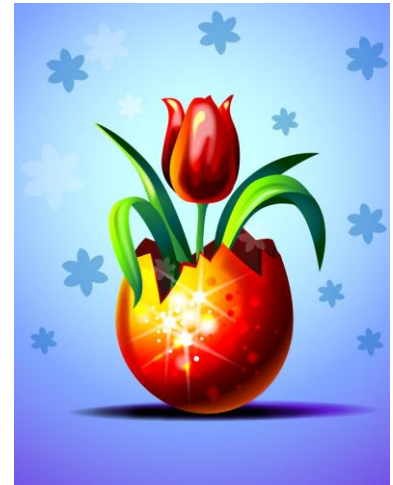
For Rock **COLLECTING:**

Bucket, eye goggles, mask, pick hammer, pry bar, chisel, good leather gloves, knee pads, knife, large and small hammers, spray bottle with water, a container for smaller rocks (you don’t want to loose or break), long handled screw driver, an old brush?

Can you think of anything I have missed? One never knows when these items will come in handy.



From Geologem 10/69 via MWF Newsletter 3/01  
via T-Town Rockhound 5/01



INTERNET addresses of interest:

- American Lands Access Association      [www.amlands.org](http://www.amlands.org)
- Blue Ribbon coalition                      [www.sharetrails.org](http://www.sharetrails.org)
- American Land rights Association        [www.landrights.org](http://www.landrights.org)
- American Federation of Mineralogical  
Societies    [www.amfed.org](http://www.amfed.org)
- House of Representatives                    [www.house.gov/writerep](http://www.house.gov/writerep)
- Senators                                         [www.senate.gov/general/contact\\_information\\_cfm.cfm](http://www.senate.gov/general/contact_information_cfm.cfm)
- Governors                                       [www.governors.gov](http://www.governors.gov)
- BLM    [www.BLM.org](http://www.BLM.org)
- Rocky Mountain Federation               [www.rmfmts.org](http://www.rmfmts.org)

## Officers & Club Information

### 2013 Board of Directors

#### Officers

President	Dan Siler	801-737-3013
Vice President	Nancy Anderson	801-425-7470
Secretary	Dave Offret	801-791-6081
Treasurer	David Law	801-731-4255

#### Activity Committee and Chairpersons

Field Trip Leader	Roger Bush	801-775-0147
Program	Ray Rutledge	801-732-8331
Door Prize	Jim Alexander	801-399-0785
Hospitality	Linda Pilcher	801-392-7620
Communications		
Membership	David Law	801-644-4931
Mini-show	Alice Crittenden	801-547-7781
Safety	Dennis Anderson	801-425-7470
Publicity	Mark Acker	801-475-4705
Buzzer Editor	Linda Pilcher	801-392-7620
Associate	Leora Alexander	801-399-0785
Associate	Dave Harris	801-737-1266
Photographer	Shari Bush	801-388-8605
Calling Committee	Sherm & Ricky Thompson	435-760-1362

#### Federation Representatives

Rocky Mountain Federation Delegate	Dan Siler
Utah Federation Delegate	Open
Public Land Advisory Committee	Jim Alexander

#### Club Affiliations

The Beehive Rock & Gem Club began in April of 1970 and is a member of the following:

- Utah Federation of Mineralogical Societies
- Rocky Mountain Federation of Mineralogical Societies
- American Federation of Mineralogical Societies
- Scribe

#### Advertising Rates:

For sale ads are permitted for members at no charge. Business advertisements will be charged at

the rate of \$5.00 for ¼ page or 15 cents per word for less than ¼ page.

#### General Objectives of the Club

The purpose of our club is to stimulate interest in the collection of rocks, minerals, gem materials, and legal fossils. To discuss and impart our knowledge of the different phases of collecting, cutting, polishing and displaying them. Also to organize educational meetings, field trips and similar events while enjoying and protecting our natural resources.

#### Membership Dues

Yearly membership dues for adult members are

Single	\$11
Couple or Family	\$16
Junior (Under 18 not part of family membership)	\$5

Dues are due October 1 of each year.

#### Meetings

General club meetings are held at 7 pm on the fourth Thursday of each month in the multi-purpose room of the City of Roy Municipal Center located at 5051 South 1900 West, Roy, Utah.

*All visitors are welcome!*

Board Meetings are held at 7 pm on the first Thursday of each month at the Roy Library located at 1950 West 4800 South, Roy, Utah.

#### Newsletter

The Beehive Buzzer is the official newsletter of Ogden Beehive Rock and Gem Club and is published eleven times per year. Please send submissions and exchange bulletins to [beehivebuzzer@gmail.com](mailto:beehivebuzzer@gmail.com).

Any material in this bulletin may be copied, unless marked as copyrighted, as long as credit is given.

