

BEEHIVE ROCK & GEM CLUB
DAVID HARRIS, EDITOR
2208 NORTH 700 WEST
OGDEN, UT 84414



**TIME VALUE DO NOT DELAY
FIRST CLASS MAIL**



BEEHIVE ROCK
AND GEM CLUB

P.O. BOX 1011
OGDEN, UTAH 84402

VOL. 39 No. 4

Website: <http://www.beehivrockandgem.com>

Apr 2011

**MEMBER OF UTAH FEDERATION OF MINERALOGICAL SOCIETIES
ROCKY MOUNTAIN FEDERATION OF MINERALOGICAL SOCIETIES
AMERICAN FEDERATION OF MINERALOGICAL SOCIETIES**

The Beehive Rock & Gem Club began in April of 1970.

The purpose of our club is: To collect, cut and polish rocks, to gather fossils, mineral specimens, to discuss and impart our knowledge of the different phases of collecting, polishing and displaying-

To promote, organize and hold meetings, outings, trips, and similar events. To enjoy and protect our natural resources.

Permission to reprint from the BUZZER is granted if credit is given as from (the original bulletin if copied, then via "others" or "et al" for those between and then) BEEHIVE BUZZER with date of issue taken from.

**USUAL DATE FOR MEETING – FOURTH THURSDAY – 7 PM
OGDEN HINKLEY AIRPORT TERMINAL, 3900 S & AIRPORT ROAD
November, December have changes. Maybe others.
Call any Board member for current information.**

BOARD OF DIRECTORS OF THE BEEHIVE ROCK & GEM CLUB FOR 2011

President & Board Chair	Joe Kent	801-771-8184
Vice President	Steve Smith	801-731-4216
Secretary	Norine Ramos	801-774-8306
Treasurer	David Law	801-731-4255
Field Trip Coordinator	Roger Bush	801-775-0147
Assistant	Ray Law	801-825-5857
Program Chairman	Ray Rutledge	801-732-8331
Door Prize Chair	Jim Alexander	801-399-0785
Hospitality Chair	Linda Pilcher	801-392-7620
Communications Chair	Kay Berry	801-825-6261
Membership Chair & Club Directory	David Law	801-644-4931
Mini-show Chair	Dean Bennett	801-773-7142
Safety Chair	Lynn Hayes	435-723-2216
Publicity	Mark Acker	801-475-4705
Managing Editor of BUZZER	Dave Harris	801-737-1266
Associate	Leora Alexander	801-399-0785
Calling Committee Chairs	Sherm & Ricky Thomson	435-760-1362
Calling Committee Chairs		

FEDERATION REPRESENTATIVES**DUES**

Rocky Mountain Federation Delegate -----President
 Utah Federation Delegate -----TBA
 Public Land Advisory Committee ----- Jim Alexander

Due: October 1
 Single - \$11
 Couple or
 Family - \$16
 Junior - \$5
 Overdue: January 1

Beehive Rock & Gem Club Program 28th April 2011

Rock Creations of different kinds

Several guest creative artisans

Ideas that some might enjoy making themselves.



Creative things with rocks that the spouse can enjoy making. Things that you don't necessarily need expensive lapidary equipment to make the items.

We invite all members to bring any special creative items made from or with rocks to the show tables. This time we encourage the creative "craft" type things -- not cabochons or jewelry items. We will have a few new creative artisans do some brief presentations.

It is also our club anniversary party with refreshments. Come join in the celebration. See you at our regular meeting at 7 PM.



"Rocky" Ray, Program Chairman

The Passing of Jim Vining

Beehive Club Members,

We received this day a call from Colleen Vining informing us of the sudden passing of her husband Jim Vining.

Our hearts go out to Colleen and want her to know what a pleasure it has been for our club to have felt of their enthusiasm, expertise and interest in the Beehive club's activities. About 2 months ago Jim gave an enthusiastic presentation on "Metal-Smithing". Then he had kicked off an interest in doing a metal-smithing class for our club prior to our next meeting in April. The Vinings were looking forward to the next field trip out of Woodward's "Dog Valley's" campground. It was only a year ago when they came to their first rock-hounding trip with us and thoroughly enjoyed themselves. We too enjoyed their humor and felt a closeness to them as well.

Hopefully Colleen can visit us in the future when this event passes. (Colleen has noted their would be no funeral or viewing as Jim wanted things that way.)

"Rocky" Ray

April Board Meeting Notes

April 5, 2011

Before the meeting began, Joe Kent, assured us that he had not been in England and gotten in trouble. The hackers who broke into his computer files wanted us to believe that, I hope no one fell for the "send me money" scam. Watch what e-mails you open!

Joe will get his new email address out later.

Business: Board voted to give Field Trip Leader Roger Bush \$0.20 a mile on field trips. Treasurer Dave Law assured us we can afford it after the excellent auction in March.

We need to let Roger know if we are going on a field trip, like the Topaz/Joy April 22-24. In the spring the weather may affect trip schedules. The Henry Mountains trip will not be early this year. As we came home April 4 on I-70 and looked south, they were still solid white and more snow has fallen since then.

Check page 1 for program information. Should be a really interesting night, you have seen the work to be spotlighted in Golden Spike's shows. Other items will be displayed as well. This will be the Club's 39th Birthday celebration! Cake & drink to be served. Hope to see you all there!

Leora Alexander, Associate Editor

SHOP TIPS

Rocky Mountain News—March 2011

Helpful Hints! (they never hurt) Many lapidarists now heat nodule and thunder egg halves under a heat lamp for a few minutes before polishing with tin oxide or cerium oxide on felt. The polish comes up almost instantly. Alternatives include putting specimens in a 200° F oven until they are warm to the touch or putting speci-mens in hot water until they are warm. Dry off excess water before polishing. To repair a spread apart link in a small broken chain, insert a toothpick in the two adjacent links. The faulty link is thus held in place for pliers to pinch it together again. To break a cavity filled with fragile crystals away from a large matrix specimen: fill the cavity with fine dirt and hold the piece with the cavity facing up to retain the dirt while you trim the specimen. The dirt prevents the shock of the hammer blow from loosening the crystals. Dinosaur bone is handled much like agate, sanded to 600 grit on silicon carbide, and polished on hard felt with tin oxide. The stone is finished with black rouge on muslin buff. The muslin buff can clean out the tin oxide that remains between the bone cells, and the black rouge applies a stain to the tin oxide that remains behind. What color rouge you use might depend on the color of your bone. To spot cracks and vugs before sawing, first soak it in a tub of water for at least an hour. Remove the rock and place it in a sunny spot. The surface will dry quickly, but the fractures and vugs will not. Use a soft pencil to mark the rock for guidance in sawing. Take lint from your clothes dryer lint catcher and add it to the polishing compound for tumbling. It will speed up the polishing and prevent chipping. Did you know that malachite is very poisonous in its raw state? Never lick the material to see the color. Don't even repeatedly lick your finger and apply. When you grind, wipe the contaminated oil off your skin right away. If you smoke and the taste becomes very sweet you are absorbing the malachite dust. The copper oxide dust is mixing with the moisture in your mouth and reacting to the tar in the tobacco, turning it into saccharine. Needless to say, you should take some immediate steps to stop the Inhalation.

Via Ft. Collins' Lodestone 2/11

Via Rockhound Gazetter 4/11

Answers to Quiz::

1: E; 2: D; 3: D; 4: E; 5: D; 6: E; 7: E; 8: D; 9: D; 10: D.

Show Dates

- Apr 29 — Wasatch Gem Society Show
- May 1 State Fairgrounds, 155 N 1000 W
Zions Building, Salt Lake City, UT
Adults \$2, Under 12 free, Park Free
Fri, Sat: 10-6; Sun: 10-5
Kaye Lee: 801-259-7446
- Jun 24-26 — RMFMS Convention & Show
Colorado Springs Mineralogical
Society
Colorado Springs, CO
Gene Maggard: 316-742-3746
- Jul 2-4 — San Jose County Gem & Mineral
Farmington Civic Center
Farmington, NM
Mickie Calvert: 505-632-8288
Mickie2@earthlink.net
- Jul 7-10 — Am Fed (AFMS) Show
Syracuse, NY
www.amfed.org/show2011.htm
- Jul 9-11 — Four Corners Gem & Mineral
La Plata County Fairgrounds
Durango, CO
Bill Birzal: 970-385-6850
webirzzz@durangoolive.net
- Jul 29-31 — Northwest Fed MS Show
Southwest Washington Fairgrounds
Chehalis, WA
csonner2011@2011@gmail.com

April Birthdays & Anniversaries

BIRTHSTONE — Emerald for love or success, beryllium aluminum silicate. It is the best know of the beryl family. A flawless emerald is more expensive than a diamond.

The Moh's scale hardness is 7.9. North Carolina is the best know United States source.

Green Spinel, magnesium aluminum oxide. Iron and copper cause the green color of :chlorospinal:. Moh's scale rating 4.5-8. North American sources include Ontario, Canada, Ny, NJ, NC, CA and NM.

Chalcedony (Desert) Rose, silicon dioxide, a type of agate. 7 on the Moh's scale. White or pale pink with a waxy texture. Our West is a good source. Hunting them is fun par tof "going south for the winter". We got some NE of Quartzsite, AZ.

ANNIVERSARY – Emerald, 55th. Jade is the modern alternate to coral for the 35th.

FLOWER – Lily of the Valley, Hawthorne is the modern alternate.

APRIL BIRTHSTONE IS DIAMOND AND MAY BIRTHSTONE IS EMERALD. In the following quiz, place a "D" or "E" to indicate which stone is being described. Answers on bottom of page 3.

1. The best known locality for ____ is Columbia.
2. ____ is pure carbon.
3. The hardest natural substance is ____.
4. The green of ____ is caused by chromium.
5. ____ occurs in igneous rock called Kimberlite.
6. ____ is found in metamorphic rocks.
7. Most highly prized of the beryls is ____.
8. Most popular ____ cut is the round brilliant.
9. De Beers control the ____ mining in South Africa.
10. A collection of colored ____ is one of the rarest groups of natural objects known.

Helen D. Editor

Via Magic Valley Gem News 4/06

False Spring

By Belle Meyers

It's time to start sharpening all your tools,
Brush up on all the Good Sportsman rules.
The rains have come, the drought is broken,
And I'm ready to go, tho I'll get a soakin'.
The rocks are washed clean and ever so bright,
You might even find 'em on a moonlit night.
So, come on, let's go on a Rock Safari,
If you find only one, you won't be sorry.
The ground is wet, the diggin's easy,
But watch out now or you'll get sneezy.
So head out today for the valley or hills,
And I hope you find a million thrills.
Jaspers a-plenty with colors so bright,
You might even find a perfect Dendrite.
Opals and Agates and Petrified Wood,
You'll find you've never had it so good.
But maybe you'd rather head for the ocean,
On second thought, that's a very good notion.
I heard on TV that where we always go,
They've just reported a foot of new snow.

Carny Hound 5/10, Via Northwest Newsletter 4/11

Public Lands Travel Management Plans Hits Snag in Courts

By John Martin, CFMS PLAC South Chair via CFMS Newsletter, 4/11, Via Breccia 4/11

Several lawsuits have been filed by various environmental groups against both the Bureau of Land Management and the US Forest Service over their Travel Management Plans. These Travel Management Plans have been going through their development and approval stages for several years and most of them have been released in their final version by the respective government agencies. In most cases the environmental activist groups felt that the government agencies did not do enough to protect the environment to the extent of the agencies own policies and procedures.

One of the long-running dispute centers on a Civil War-era mining law, known as R.S. 2477, which granted rights-of-way across public land until it was repealed by congress in 1976. Existing rights-of-way, however, were grandfathered in and now these environmental activists want most of these roads (Rights-of-way) across our Public Lands closed.

A large number of these roads and trails have been used for years by hunters, fishermen, and off road users and, yes, even rockhounds use some of these roads to get to our favorite collecting areas or campsites. Congress has enacted legislation requiring agencies responsible for the management of our public lands to establish and implement a Travel Management Plan identifying for the multipurpose usage of roads, trails and access rights-of-ways through the public lands they manage. They must take into consideration the recreational and commercial value of these roads and the environmental impact the roads and users of the roads may or may not have on the public land they manage.

The environmental activist groups have been active for several decades trying to achieve their agenda of having no unpaved roads through our public lands or as they call it "A Roadless Wilderness", where the only way to gain access is on foot or horseback. This will kill most all rockhounding as we know it today.

What these lawsuits have accomplished, whether ruling in favor of the OHV users, the Government Agencies or the Environmental Activist Lobby, is allow time to return to the negotiating table and

reconsider and re-plan the usage of these roads across our public lands. Now, we in the Rockhound community have a chance to let our voices be heard and our wishes be known on these matters. If we speak long enough and loud enough and with a

unified voice, we may just be able to keep our access roads open to mechanized travel now and for future Rockhounds to enjoy.

It will take several years to re-draw the Travel Management Plans, so the fates of our collecting sites are ours to loose. Please get informed and become proactive in the process. A good way to start is to contact your Federation, Federation Director and check often the American Land Access Association (ALAA) Web site . The CFMS website www.cfmsinc.org , the AFMS Website and all of the

Regional Federation websites can be accessed through the ALAA Website www.amlands.org.

Comment and Opinion

The House Committee on Natural Resources Hearing Ken Salazar's Secretarial Order Number 3310 Protecting Wilderness Characteristics on Lands Managed by the BLM

By John Martin, CFMS PLAC- South Committee via CFMS newsletter, 4/11, Via Breccia 4/11

Purpose. This Secretarial Order (Order) affirms that the protection of the wilderness characteristics of public lands is a high priority for the Bureau of Land Management (BLM), and is an integral component of its multiple use mission. The Order provides direction to the BLM regarding its obligation to maintain wilderness resource inventories on a regular and continuing basis for public lands under its jurisdiction. It further directs the BLM to protect wilderness characteristics through land use planning and projectlevel decisions unless the BLM determines, in accordance with this Order, that impairment of wilderness characteristics is appropriate and consistent with other applicable requirements of law and other resource management considerations. The full text of the order may be read on the ALAA Website <http://www.amlands.org/27112/56812.html> .

On March 1, 2011 The Governors of Idaho, C.L. "Butch" Otter, and Utah, Gary R. Herbert, frustrated policy on designating "wild lands" in Bureau of Land Management areas, took their case to

Washington DC and asked lawmakers to insist that only Congress be allowed to establish wilderness areas. The testimony lasted over 6 hours and had a live feed over the internet. Witnesses of some notoriety to Utah were Governor Herbert and Commissioner Mike McKee. Governor Herbert came across, cool, articulate, reasoned, and yet aggressive. Commissioner McKee really illustrated the significant harm Wild Lands would likely have on local economies and rural communities. Both Governors did an outstanding job defending their position that order 3310 was unnecessary, went around existing federal procedures, and would do more harm to western states than good. Both Governors stated the compliance to the order would hurt the public schools in both of their states and would burden the already stressed taxpayers with additional liabilities to cover the cost to re-inventory BLM Land that had been inventoried under current law. Both states have spent over 7 years each to accomplish the required inventory of BLM lands for the "Wilderness Characteristics" within their states as required by current legislation. All of their points were well taken by the panel of House Representatives. Both governors said the secretarial order issued Dec. 23 by Interior Secretary Ken Salazar demonstrated a disregard for a collaborative approach to managing public lands in the public interest. Herbert said he learned about the wild lands plan only a few hours before Salazar announced it, while Otter did not learn of it until after the fact (247 DER A-9, 12/28/10). Rep. Rob Bishop (R-Utah), chairman of the committee's public lands subpanel, was in top form as he made statements and questioned witnesses. All of Utah's, Public Lands Recreationalists and Rockhounds are lucky to have Congressman Bishop and his exceptional staff on our side. Mr. Bishop submitted written testimony to the committee from Recreational user groups (AMA, BRC, USA-ALL and others) opposing the Secretarial Order. There were also many other county commissioners and other experts. All did well. It really was great to see so many members of Congress who seem to be on our side and who really grilled BLM Director Abbey and Wilderness activist Peter Metcalf, owner and CEO of Black Diamond Equipment in Salt Lake City, UT.

After more than four hours of testimony from Western governors, county commissioners, legal experts and the CEO of an outfitting company, BLM Director Abbey defended the policy before a skeptical GOP majority in the House Natural Resources Committee.

Rep. Rob Bishop (R-Utah), chairman of the committee's public lands subpanel, grilled Abbey on how the order would affect BLM resource management plans developed over the past decade in Utah and recently completed under the George W. Bush administration. Interior Secretary Ken Salazar "arbitrarily" threw out those management plans in Utah with the attitude "I don't like the answer, I'm going to start over again," Bishop said.

Abbey replied that field managers were under no obligation to amend completed land-use plans but rather must re-view them to make sure they comply with the secretary's order. "We don't necessarily have to amend anything," he said.

Director Abbey was pressured even harder by Alaska Rep. Don Young (R), who suggested BLM's implementation of the policy in his state was illegal and would be met by lawsuits. "This committee should file a lawsuit, too," he said. "You're thumbing our nose at Congress; you're going against the law. Your administration stinks right now."

During testimony by Governor Otter and Herbert it was stated that over 65% of the land in their states was owned by the federal government and managed by either the BLM or the USFS. Out of this land only 2% was designated "Wilderness". Over the last 2 years no additional public land had been designated as "Wilderness" was a comment made by the Rep Markey (D-MA). Is there some mandate that requires a percentage of public land be designated as "Wilderness" each year? Written testimony from both governors may be found on the ALAA Website under Their respective state page.

<http://www.amlands.org/6652/index.html>

By the end of the 6 hour session both sides had had their chance to state their case before the House Committee on Natural Resources and BLM Director Abby had stated Secretary Salazar's position and reasons for issuing Secretarial Order Number 3310—Protecting Wilderness Characteristics on Lands Managed by the Bureau of Land Management. Committee Chairman Hastings stated more hearings are being scheduled to bring to a conclusion this important issue on Public Land Management. More information on the hearings may be found on the House Website

<http://naturalresources.house.gov/Calendar/EventSingle.aspx?EventID=226023> A webcast of the hearing is available on the ALAA Website and on the House Website above.



Hammer Safety; SAFETY FIRST

by Bill Klose, EFMLS Safety chairman March 2000 EFMLS News

Hammers used by rock hounds come in every size, type and construction, and include rock hammers, bricklayer's or mason's hammers, blacksmith's or sledge hammers, machinist's peen hammers, jeweler's hammers, setting hammers, soft face hammers, lead or copper faced hammers, trimmer's and welder's hammer's, as well as a variety of mallets, such as rawhide, rubber, and tinner's. I have even seen napping hammers (a 3 pound high carbon steel hammer with tapering faces used for forming stones during road construction or similar stone work) and railroad track mauls (used for driving railroad spikes). As it is hard to anticipate what a rockhounds "favorite weapon" will be, I thought I would present a list of general hammer safety practices followed by the proper use of some of the more common hammer types.

1. Always select the proper type, size, and weight of hammer for the job.
2. Always wear eye protection.
3. Always strike a hammer blow squarely, avoiding glancing blows and over and under strikes. The hammers striking face should be parallel with the surface being struck.
4. When striking a chisel, punch, or wedge, the striking face of the hammer should be 3/8" larger than the struck face of the tool. Both the striking hammers face and the struck face of the tool should be free of oil.
5. Do not strike another hammer with a hammer.
6. Do not strike a harder surface with a hard surface hammer.
7. Never use a hammer with dents, cracks, chips, mushrooming, or excessive wear. Replace the hammer-redressing is not recommended.
8. Replace worn or damaged handles. A qualified individual should replace hammer handles. Most hardware stores will replace hammer handles for a nominal fee. They can also provide a rubber sleeve for sledge hammers, which will prevent handle damage just above the head.



Bricklayer's or mason's hammers are designed for setting or splitting bricks, masonry tile, and concrete blocks. Never use them to strike metal or drive tools such as chisels. The blade of a bricklayer's hammer should be kept sharp by redressing at a 40 degree angle with a bench grinder. Keep the metal cool while grinding by quenching often in water to protect the metals tempering.

Hand drilling hammers are used with chisels, star drills, punches, and hardened nails. Never use common nail (claw) hammers for striking metal, such as chisels, as they are designed for driving unhardened nails and their shape, depth of face, and balance make them unsuitable for this use.

Machinist's peen hammers (ball, cross, or straight) are designed for striking chisels and punches and riveting, straightening and shaping metal.

Blacksmith's or sledge hammers are designed for striking wood, metal, concrete, or stone, depending on size, weight, and shape. When using a hammer, grip the handle near the end where it is designed for gripping and will give you the best control and impact with the least effort. Watch your hands, shins, and feet. It may be advisable to wear gloves, long sleeve shirts, and high lacing safety shoes to protect from flying debris and sharp shards if the situation warrants it. When storing hammers for a period of time, lightly lubricate metal parts, but wipe any oil or grease from rubber mallets or rubber handle grips to prevent damage to the rubber.

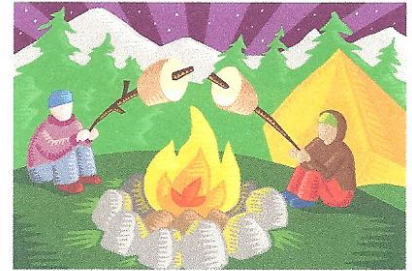


So get out there and hammer up a storm, safely.

INTER-REGIONAL ROCKHOUND RENDEZVOUS



Inter-Regional Rockhound Rendezvous and Field Trip May 27 – 30, 2011 Hampton Butte, OR



Directions: From the South – Traveling east or west on US 20 turn north on Van Lake Rd. (mile marker 52) go north approximately 16 miles Watch for camp signs as you approach Camp Creek road. Road is a maintained gravel road.

Directions: From the North – Driving from Prineville, Oregon go east on highway 380 to mile marker 44, turn south (or right) on Camp Creek road and drive south until you get to the junction of Van Lake Rd. Watch for signs (all but the last several miles are paved)

Facilities: The campground is a large pasture. This is a “dry camping” area and with porta potties. It can accommodate all sizes of motorhomes and trailers and is also very good for tenters. You will be camping on private property and need to follow some basic rules, No off road except camp area, no cutting of fire wood and **NO ROCK COLLECTING ON THE RANCH.** If you have questions check with camp host.

Collecting Trips: The organized collecting trips will start on Friday morning. All trips will leave at **8:30 AM, SHARP ???**, from the campground. We will be running a maximum of 50 collectors to three separate locations on Friday, Saturday and Sunday You will have to sign up each day on a first come first served. **THREE TRIPS WILL BE LEAVING FOR THE THREE LOCATIONS EACH OF THE THREE DAYS.**

Schedule:

Thursday, May 26	Arrive at camp: Welcome potluck dinner and get together with camp fire.
Friday, May 27	Daily Field Trips #1 Hampton Butte #2 Paulina Area #3 Camp Creek Area. Evening : BLM * Talk on Geology of the Area USFS * Newly Discovered Calderas Camp Fire -
Saturday, May 28	Daily Field Trips #1 Hampton Butte #2 Paulina Area #3 Camp Creek Area. Evening : All Rendezvous Potluck Dinner and Camp Fire
Sunday, May 28	Daily Field Trips #1 Hampton Butte #2 Paulina Area #3 Camp Creek Afternoon and Evening: Rock Swap, Wood identification by Walt Wright.
Monday, May 30	Daily Field Trips Glass Butte, Open Day you may go to any of the collecting areas
Tuesday, May 31	Break camp to head for home or other adventures

Plan on several potluck dinners, and daily happy hours. Bring firewood for evening campfires. We plan on having a good time and collecting some good material.

Please notify one of the Federation leaders early, but no later than May 20th if you plan to attend. E-mail (or call) if you have questions or need more information. This will be a great opportunity for rockhounds from all over to meet one another, to share stories, and information about collecting in their home areas. Be sure to bring material from your favorite collecting sites to show and share, trade or sell.

Come join us for a great Inter-Regional Rendezvous of collecting, fun and fellowship.

Doug True
Northwest Federation
dtruefossils@yahoo.com
406-670-0506

Richard Pankey
California Federation
dickpankey@juno.com
925-439-7509

